



PRESENTED BY:



IN ASSOCIATION WITH:



SPECIAL SERVICES



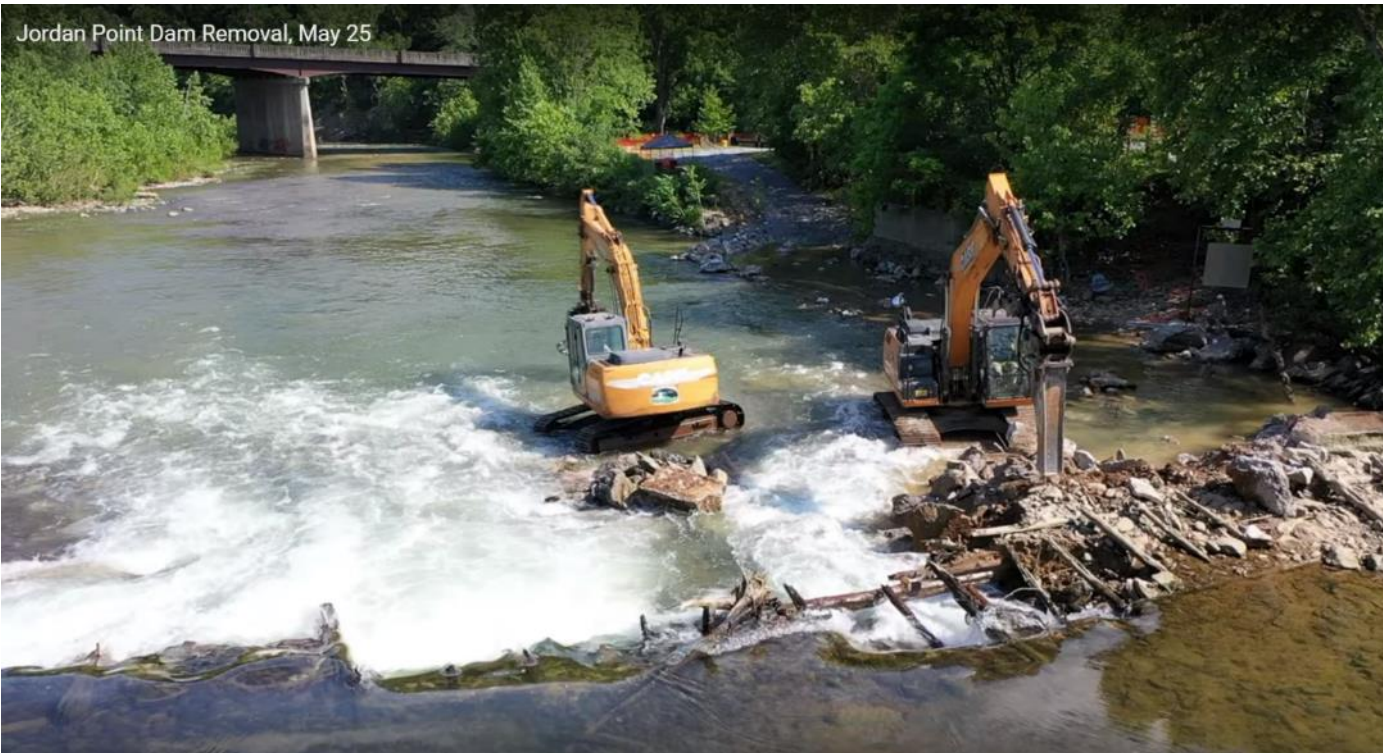
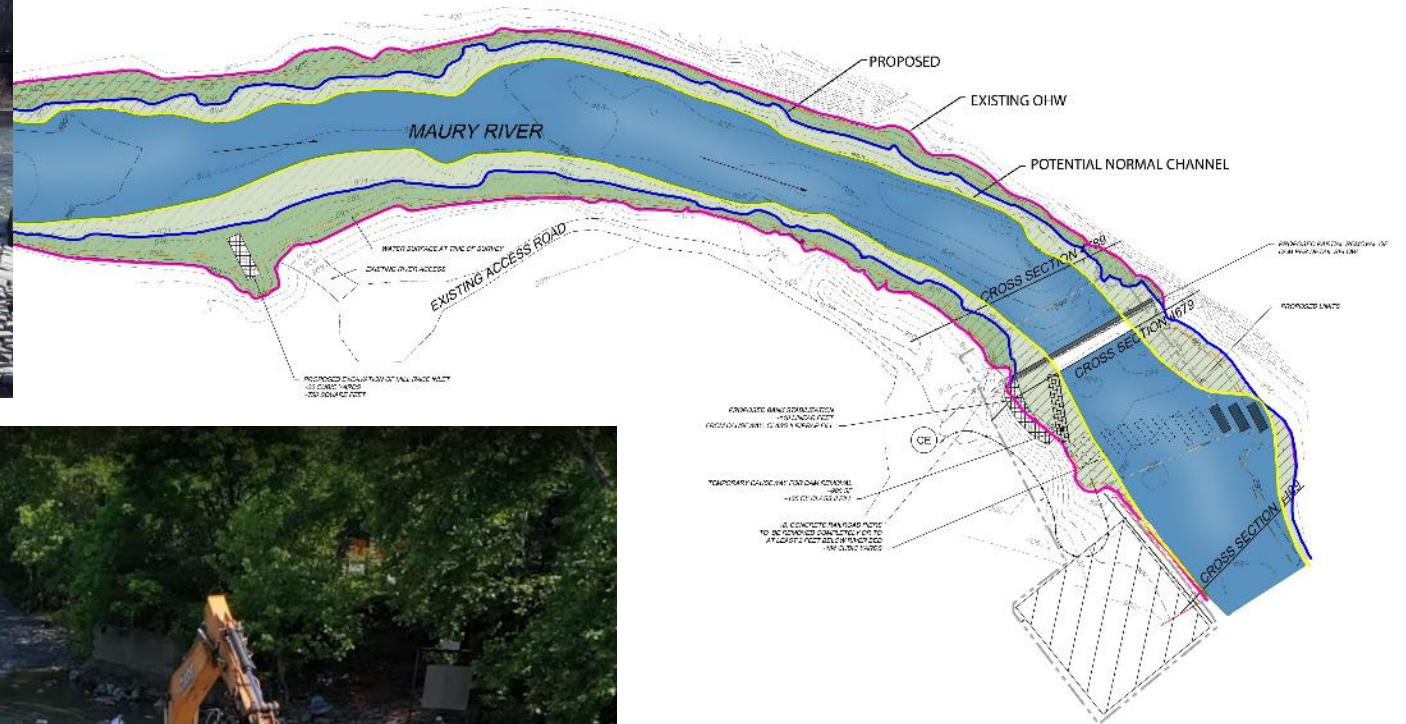
ROBERT MCGINNIS
LANDSCAPE ARCHITECTS

Hello!

- Objectives and Process Overview
- Findings and Input
- Plan and Recommendations
- **Questions and Discussion**



15 minutes





Water Access

Improve integration of water resources & environment

Plan



History and Culture

Integrate and protect historic resources and narrative

Prioritize



Environmental Resiliency

Improve integration of water resources & environment



Recreation

Integrate community recreation & culture, provide destination quality amenity

Fund

1

2

3

4

5

6

7

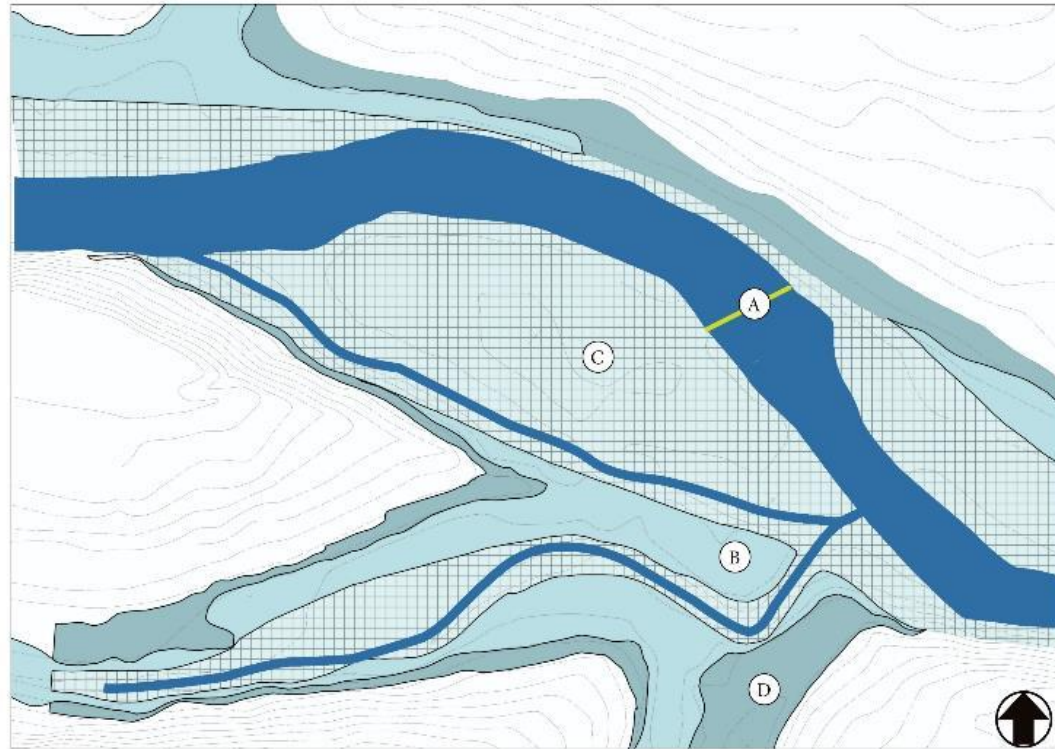
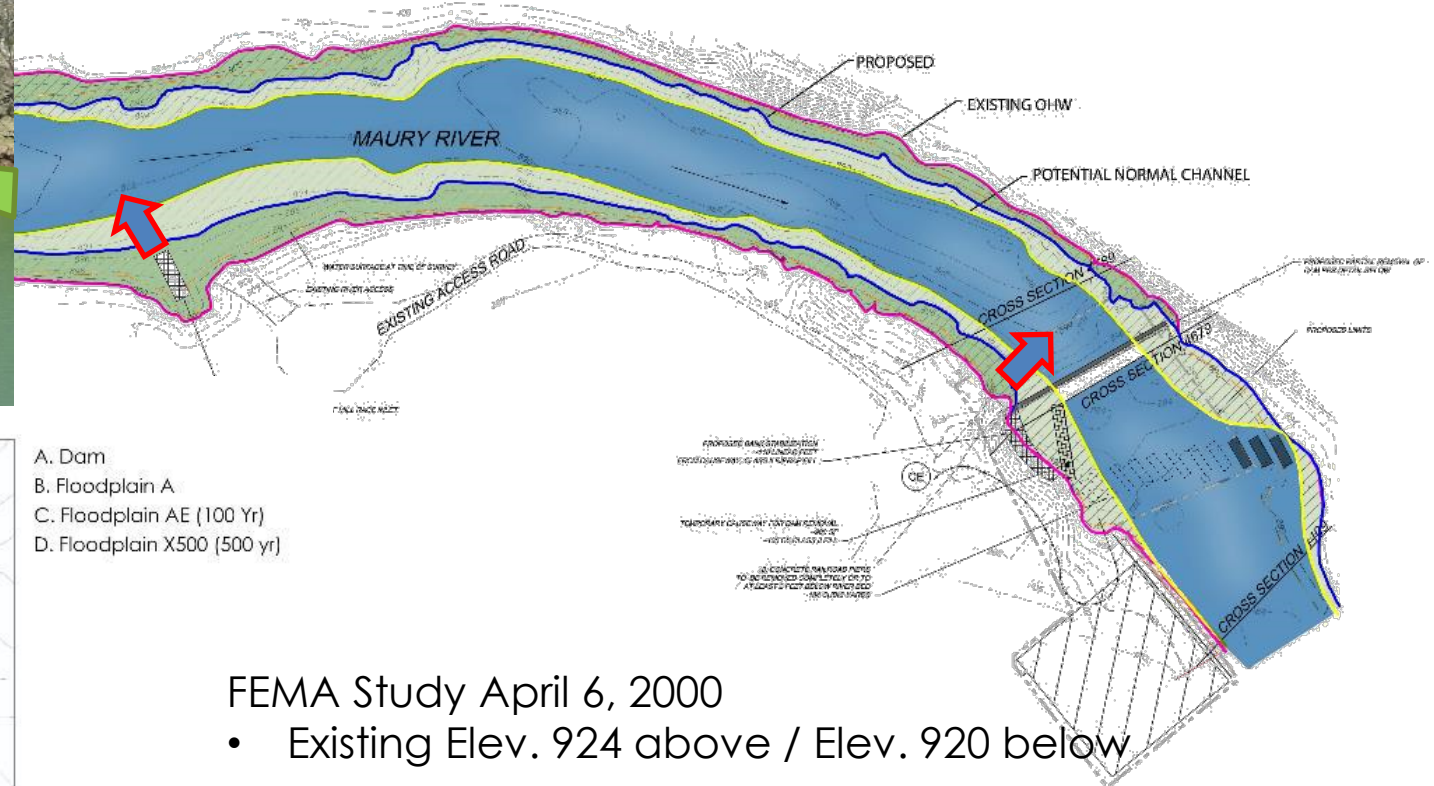
Site Analysis

Confirm Needs
& Program

Master Planning
(You are here)

Implementation
Plan





FEMA Study April 6, 2000

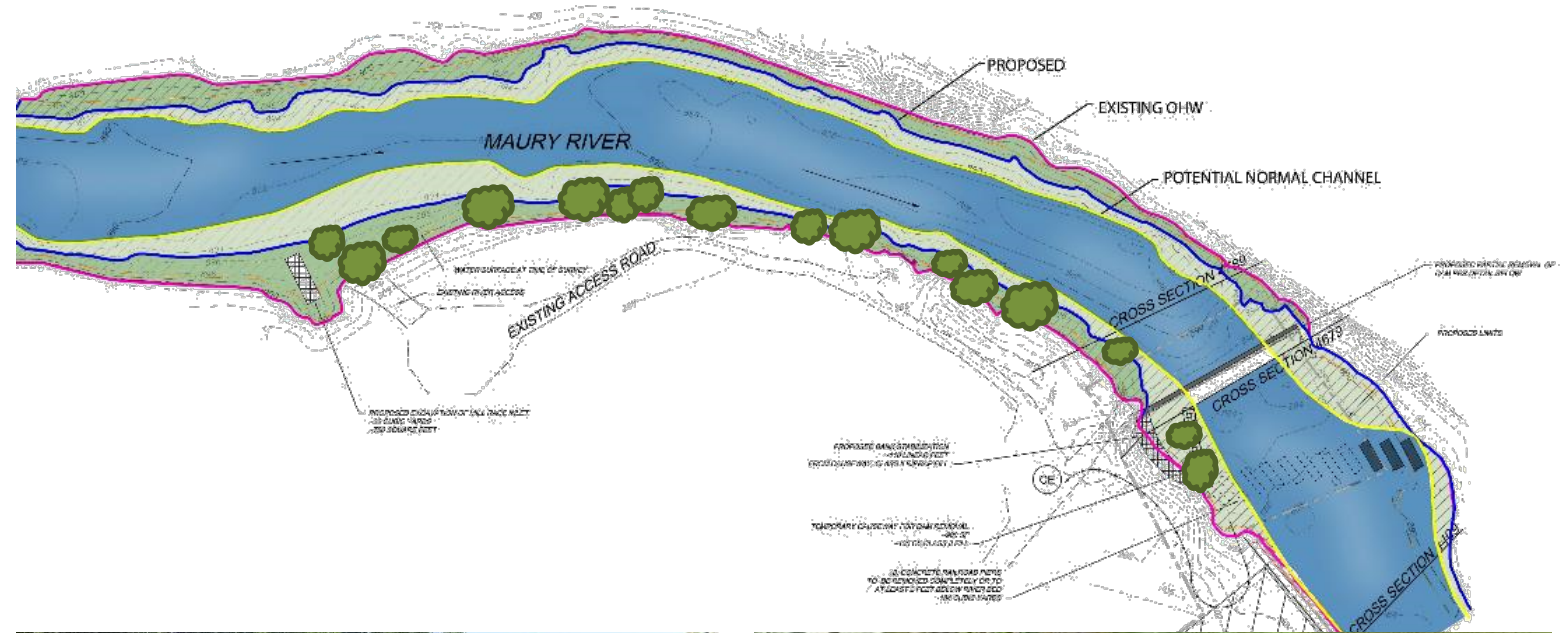
- Existing Elev. 924 above / Elev. 920 below

HEC-RAS modeling of the dam removal

- February 2018 Study
- No change below the dam
- Biggest change at dam
- Reduction upstream varied for the 100-yr storm and the Ordinary High Water level

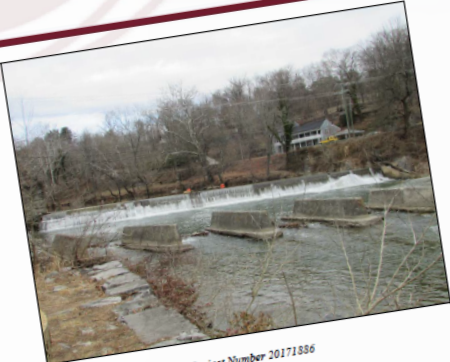
Streambank Stabilization

- Existing seeds in sediment
- Live stakes (willows and dogwood stakes planted during winter months)
- Bare Root Seedlings (coordinate w/ forestry dept for winter planting)
- Local plants establish best (200 mile radius)
- Riparian seed mix (slower to grow / best incorporated with cover planting)
- Blanket matting to minimize erosion
- Incorporate tree plantings into a community outreach program



HISTORICAL/ARCHEOLOGICAL FEATURES

INTENSIVE-LEVEL ARCHITECTURAL SURVEY OF THE JORDAN'S POINT DAM (081-7164), THE JORDAN'S POINT HEAD RACE (081-7165), AND THE CHESAPEAKE AND OHIO RAILROAD PIERS (081-7166) IN THE CITY OF LEXINGTON AND ROCKBRIDGE COUNTY, VIRGINIA.

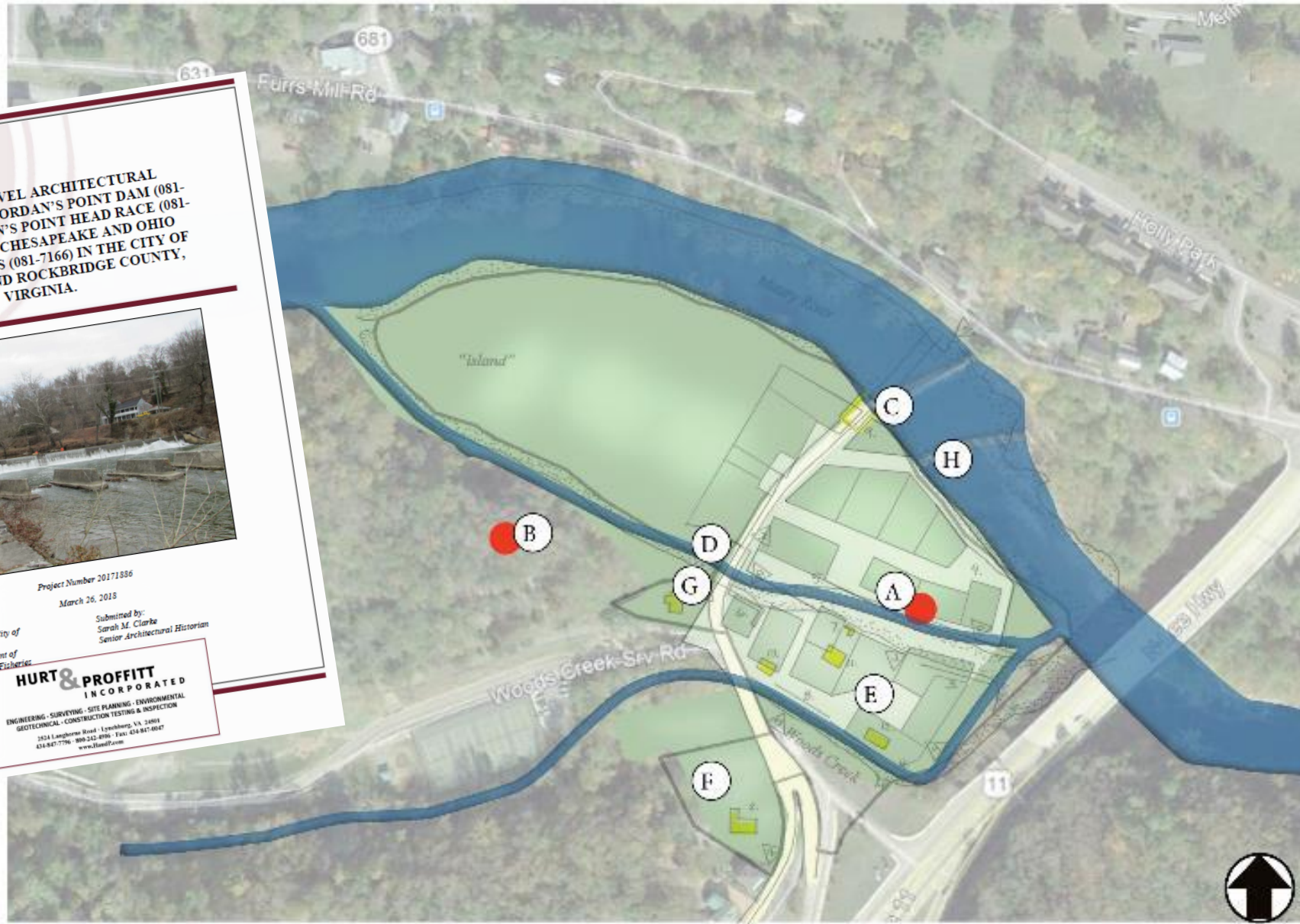


Project Number 20171886
March 26, 2018

Submitted to: The City of Lexington and the Virginia Department of Game and Inland Fisheries

Submitted by: Sarah M. Clarke
Senior Architectural Historian

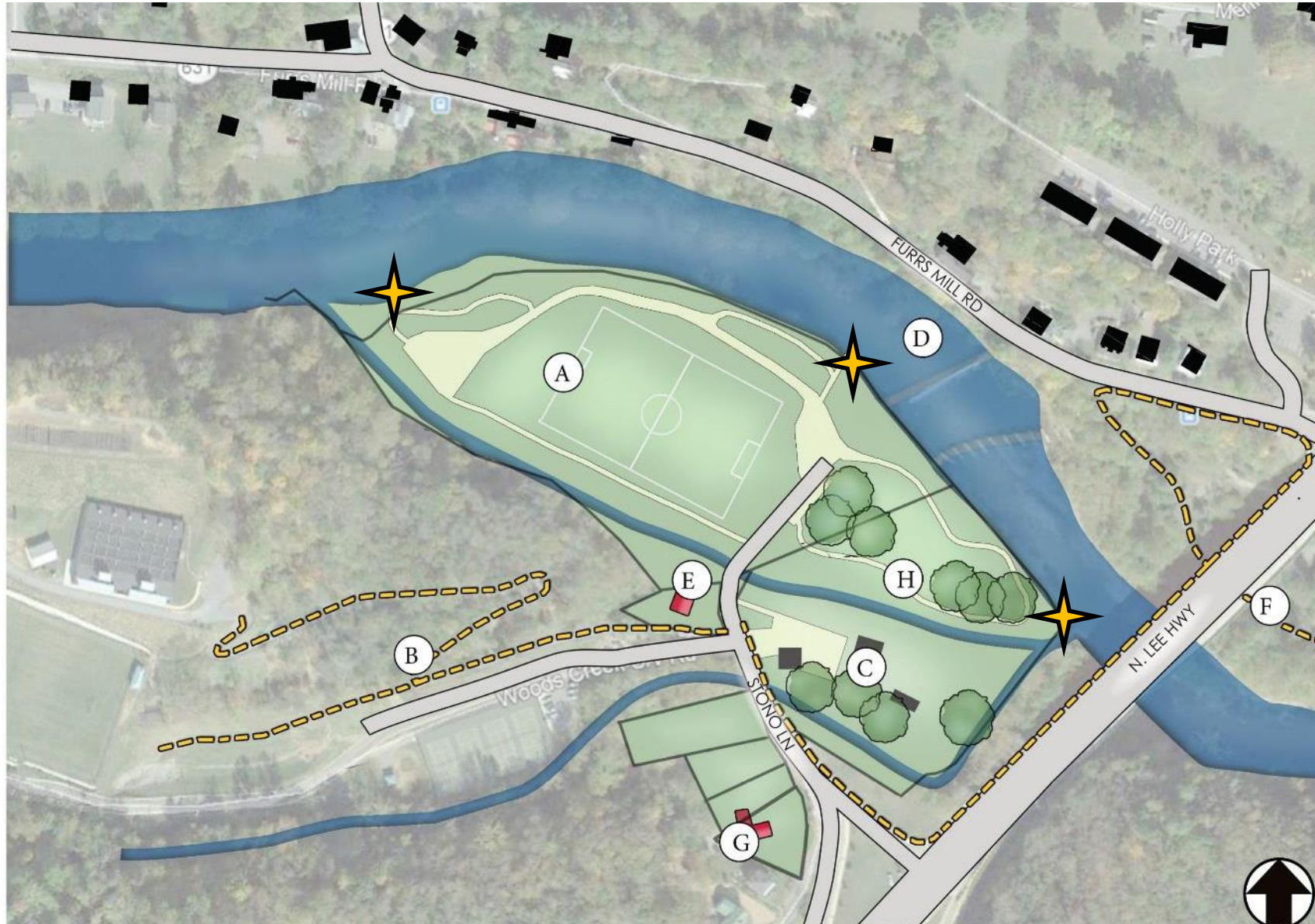
HURT & PROFFITT INCORPORATED
ENGINEERING - SURVEYING - SITE PLANNING - ENVIRONMENTAL
GEOTECHNICAL - CONSTRUCTION TESTING & INSPECTION
2424 Longshore Road - Lynchburg, VA 24505
434-847-7796 - 800-242-8106 - Fax: 434-847-0047
www.hurl.com



- A. Archeology site: Industrial and Transportation Center
- B. Archeology site: "McCausedland's Ridge": confederate sniper position, civil war
- C. Covered Bridge Abutment
- D. Millrace Bridge
- E. Historic factory and Mill buildings; cotton, woolen, flour, grist and lumber mills.
- F. Beechenbrook Chapel (still in existence)
- G. Miller's House (today is a museum)
- H. River footpath



AMENITIES AND OPPORTUNITIES



- A. Recreational Field/play area
- B. Woods Creek Trail
- C. Covered Pavilion event and picnic area
- D. Canoe launch, Fishing Areas, paddling areas (slower waters)
- E. Miller House Museum/ Park Entrance
- F. Access to the Chessie Trail
- G. Historic Beechenbrook Chapel
- H. Walking Trail



Observations

- A well loved park!
- Visible/tactile history
- Sweeping river frontage
- Wear and tear/obsolescence
- Dominated by vehicles
- Pedestrian and vehicle conflicts
- Lack of engaging recreation
- Cluttered interpretive plan
- Erosion and degradation
- Legacy trees
- Vegetation threatens walls
- Wall timbers were intact (anaerobic)

Supporting Investigations and Reports

DHR review letter, October 2019
 EDR NEPA Report, EDR, October 2019
 Historic Preservation Recommendations, R.McGinnis, January 2019
 Interpretive Narrative Approach and Concepts, Riggs Ward Design, February, 2020
 Historic Wall Condition Assessment; McMullen Consulting Engineers March, 2020



Water Access

2 access points
 Remains viable
 Opportunity for amenity & integration
 Erosion

History and Culture

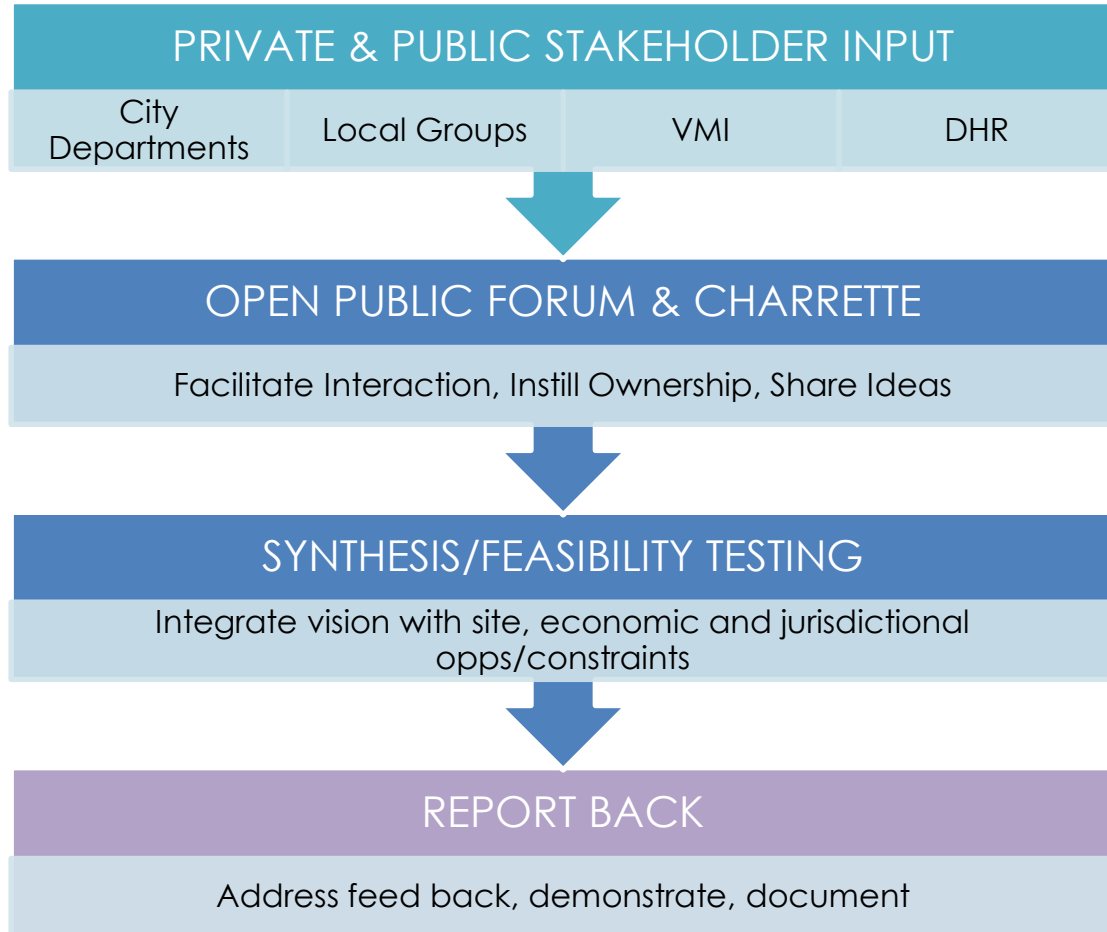
Visible
 Engaging stories
 Not tactile
 Deteriorating
 Adds value

Environmental Resiliency

Destabilizing
 Non managed access
 Lack of diversity

Recreation

Trail connectivity
 Athletics
 Fishing
 River access
 Limited diversity
 Limited site engagement



- Community Survey
- Stakeholders
Stakeholder, user groups, partners
- Public Meetings
Community priority, vision
- Schools
Kids, families, educators



US Army Corps of Engineers®

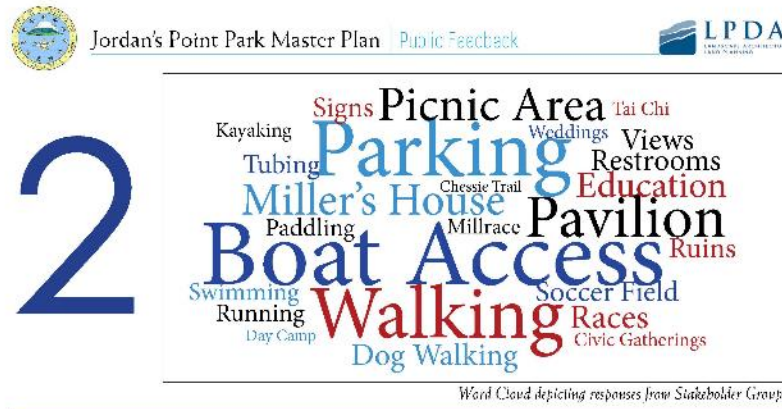




WHO is currently using Jordan's Point Park?

DIRECTIONS
 PLACE 1 BLUE DOT next to a group that best defines your affiliation with Jordan's Point Park.
 PLACE 1 RED DOT next to another group that you are affiliated with at Jordan's Point Park.

	VMI (Virginia Military Institute)
	FOCT (Friends of the Chessie Trail)
	RACC (Rockbridge Area Conservation Council)
	Coastal Canoes/Virginia Paddlers
	RARO (Rockbridge Area Recreation Organization)
	Park Neighbor
	Citizen of Lexington or Rockbridge County
	Other Soccer Group
	RACI (Rockbridge Assoc. for Community Involvement)
	Bike related group or activity
	RCHS (Rockbridge County High School)
	RAOP (Rockbridge Area Outdoor Partnership)
	W&L (Washington & Lee)
	HLF (Historic Lexington Foundation)
	RHS (Rockbridge Historic Society)
	Monacan Nation
	OTHER



WHAT facilities do you most often use Jordan's Point Park?

DIRECTIONS
 PLACE 1 BLUE DOT on a facility you use/visit the MOST at Jordan's Point Park.
 PLACE 1 RED DOT on another facility you use/visit at Jordan's Point Park.

Picnic Area	Boat Access	Walking Paths/Trails
Pavilion	Miller's House	Soccer Field
River Sports/Swimming	Historic Ruins	Chessie Trail
Restrooms	Parking	Millrace
Trail Running	Interpretive Signs	Overlook
Other		



What are the STRENGTHS of Jordan's Point Park?

DIRECTIONS
 PLACE 1 BLUE DOT on what you think is the BEST feature/quality of Jordan's Point Park.
 PLACE 1 RED DOT on another strong feature/quality of Jordan's Point Park.

Mauy River	Soccer Field	Pavilion
Parking	Wildlife	Events
Restrooms	Chessie Trail Connection	Museum
Picnic Areas	Location	Historic Signage
Quiet/Meditative	Active/Exercise	Safety
Other		

4



Word Cloud depicting responses from Stakeholder Groups

What are the **WEAKNESSES** of Jordan's Point Park?

DIRECTIONS

PLACE 1 BLUE DOT on what you think is the biggest WEAKNESS of Jordan's Point Park.
PLACE 1 RED DOT on another weakness at Jordan's Point Park.

Pedestrian Safety	Vehicular Access	Insufficient Parking
Pavilion Availability	Lack of Wayfinding Signage	Access to the Chessie Trail
Difficult River Access	Pavilion Acoustics	Not Enough Trails
Degrading Historic Ruins	Overlook Area	Trash
Soccer Game Crowds/Noise	Lack of Connection Between Facilities	Lack of Flowing Water In the Millrace
Other		

5



Word Cloud depicting responses from Stakeholder Groups

How can we **IMPROVE EXISTING FACILITIES** at Jordan's Point Park?

DIRECTIONS

PLACE 1 BLUE DOT on the potential improvement that is MOST IMPORTANT to you at Jordan's Point Park.
PLACE 1 RED DOT on another potential improvement you would like to see at Jordan's Point Park.

Reduce Pedestrian/Vehicular Conflicts	Improve Vehicular Access	Improve Boat Launch
Improve River Access	Interpret History of Site	Expand Parking
Plant Native Plants	Add Picnic Facilities near the River	Limit Historical Signage/Monuments
Better Wayfinding Signage	Enhance Educational Experience	Expand the use of Soccer Field
Create a Consistent Trail Surface	Enhance the Overlook Area	Improve Chessie Trail Access
Other		

6



Word Cloud depicting responses from Stakeholder Groups

What **ADDITIONS** to facilities or programming would you like to see at Jordan's Point Park?

DIRECTIONS

PLACE 1 BLUE DOT on the addition you would MOST like to see at Jordan's Point Park.
PLACE 1 RED DOT on another addition you would like to see at Jordan's Point Park.

More Special Events at the park	River Equipment Rentals	Multi-generational "Playground"
Amphitheater	Electric Hookups for food trucks/vendors	Running Loop
Connect to City-wide Bike Route	Nature Interpretation	Exercise Stations
Non-vehicle Event Camping	Historical Tours	Kayak Lessons
Interactive Art-in-Place	Other	
No New Facilities or Programming		



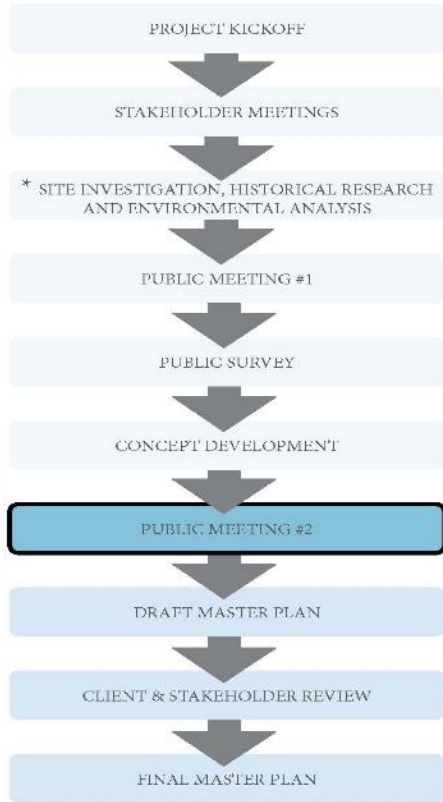
- ① Clad restroom
- ② Expanded parking lot with dog walk loop path
- ③ New bridge at Wood's Creek
- ④ Expanded overflow parking lot
- ⑤ Additional picnic shelter and gazebo with cleared views
- ⑥ Nature Playground
- ⑦ New vehicular road
- ⑧ Re-striped soccer field, shifted slightly
- ⑨ New riverfront promenade with interpretation of boat history
- ⑩ Sign plaza
- ⑪ Enhanced historical and ecological interpretative stations
- ⑫ Steps/railing to river
- ⑬ Tail Race access area
- ⑭ Fishing/River viewing areas
- ⑮ The point terrace with wall repair and armoring
- ⑯ Trail kiosk/sign plaza
- ⑰ Pave and stripe spaces
- ⑱ Revegetated/stabilized shoreline



B

A

MASTER PLAN PROCESS



TODAY

* Regarding the Mill Race

As a result of this study, LPDA has recommended that the city engage an engineering firm to investigate the technical pros and cons of re-watering the Mill Race. Additionally, LPDA has recommended engaging a preservation engineer to assess, preserve, and protect the historic structures in the tail race.

WHAT WE HEARD

Surveys and Workshop Quantitative Results	Summary of Additional Comments:
<p>MOST USED EXISTING FACILITIES</p> <p>* OTHER THAN RIVER ACCESS, WHICH RANKED FIRST PRIORITY AMONG PARK USERS</p>	<p>MOST USED EXISTING FACILITIES</p> <ul style="list-style-type: none"> • Trails and walking paths ranked very high • Pavilion and Picnic areas were indicated as a high priority • Athletic fields were also noted in the comment sections as one of the most used facilities at the park.
<p>EXISTING FACILITIES NEEDING IMPROVEMENT</p>	<p>FACILITIES NEEDING IMPROVEMENT</p> <ul style="list-style-type: none"> • River access • Trail access and connections • Athletic field improvements
<p>Potential Future Facilities</p>	<p>POTENTIAL FUTURE FACILITIES</p> <ul style="list-style-type: none"> • New children's playground. • Improved boat launch and access • More trails and improved trail connections • Restored Mill Race • More picnic areas/pavilion • Preserved natural feel • Improved pedestrian river access • More benches and sitting areas near the river • Trash receptacles and clearance • Improved wayfinding signage • Enhanced and preserved interpretive history
<p>Priority for potential improvements</p>	<p>PRIORITY FOR IMPROVEMENTS</p> <ul style="list-style-type: none"> • Pedestrian connectivity • River access • Improve connections with nature • Additional native plants and river bank restoration

SUMMARY

Jordan's Point Park is a cherished place for residents and visitors in Lexington. It is unique because of its location on the Maury River and should be enhanced to celebrate and better utilize the river. Any changes should be sensitive to the environment, blend with the existing character, and use native materials/plant species.

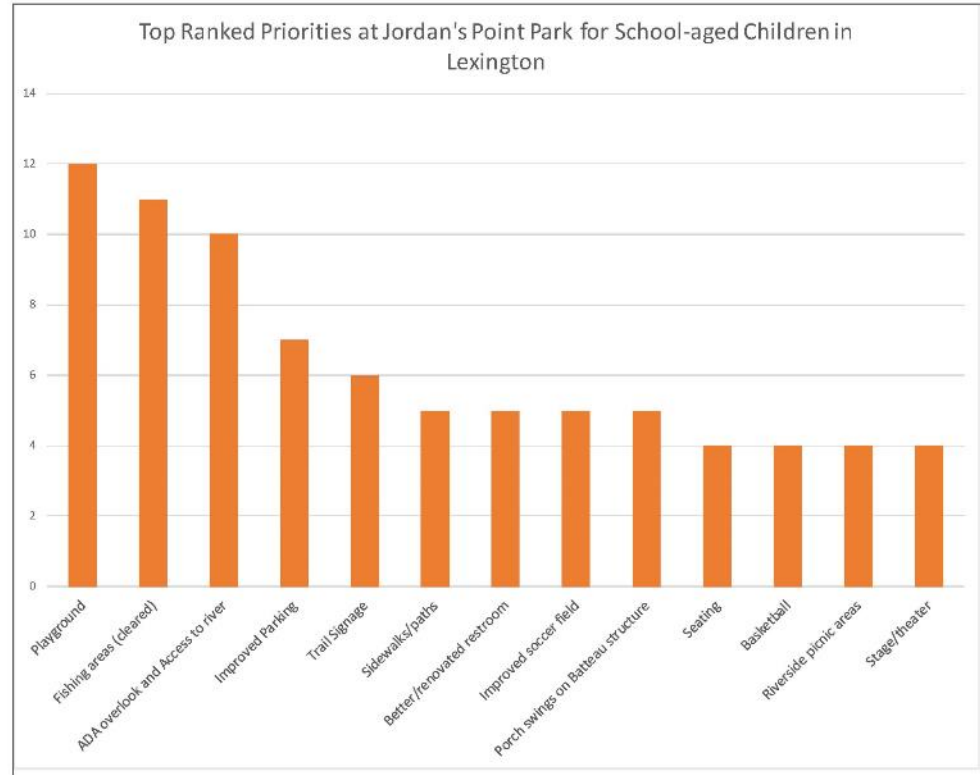
- 1 The Maury River is the main focal point and identity of Jordan's Point Park. The river creates a unique location and setting for the park that distinguishes it among other local parks. The river draws many destination visitors and local residents to enjoy kayaking, paddling, and swimming. Some are drawn to the park to view its rich ecosystem of river fauna and flora and others simply enjoy the views.
- 2 Jordan's Point Park is located at the crossroads of two important trail systems: The Woods Creek Trail and Chessie Trail. Historically, a footbridge allowed access to the Chessie Trail at Jordan's Point, which is no longer deemed a viable option. Chessie Trail access is difficult and somewhat unsafe requiring traversing a busy highway bridge. Respondents indicated that a high priority for the park is to enhance these trail connections and access points.
- 3 Jordan's Point Park's athletic field is widely used throughout the area. For respondents, the athletic field emerged as one of the most important priorities. The park hosts many soccer games and tournaments. For the home team, the field is a place of pride and a reflection of their community. The field is in good to average condition, but enhancements are necessary.

PROJECT PRIORITIES

- River access, visual and physical
- Pedestrian access, better connections to trails and to the park
- Wayfinding signage, improve park access and circulation
- Preservation of natural habitat, tranquility, native plants, and history
- Stabilize and vegetate new exposed river banks
- Upgrades to athletic field and related facilities
- Picnic spaces, bigger pavilion and additional picnic areas along the river
- Introduction of a play space, integrated with nature
- Improves parking, especially offering overflow for athletic events
- Improved interactive historic interpretation
- Consider adding a dog park or dog run in or near the park

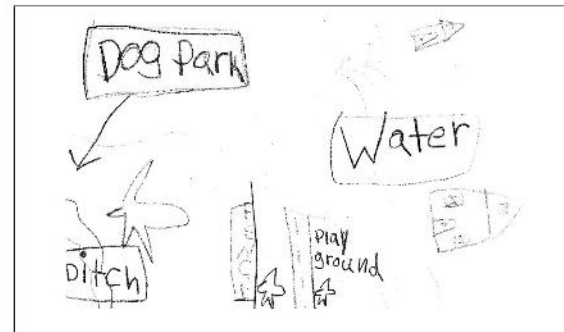
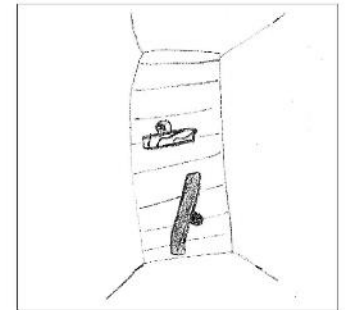
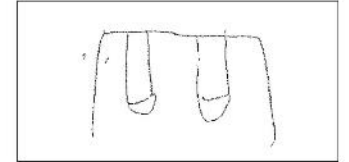
Priorities

- Playground
- Fishing Areas
- ADA River Access
- Improved Parking
- Signage
- Walkways
- Restroom



FULL LIST OF CHILDREN'S PRIORITIES FOR JORDAN'S POINT PARK

Playground	12
Fishing areas (cleared)	11
ADA overlook and Access to river	10
Improved Parking	7
Trail Signage	6
Sidewalks/paths	5
Better/renovated restroom	5
Improved soccer field	5
Porch swings on Batteau structure	5
Seating	4
Basketball	4
Riverside picnic areas	4
Stage/theater	4
Docks	3
Improved area around field	3
Dog trail or park	3
Interpretive signage	3
Revegetate/stabilize shoreline	3
Sandy area near river	3
Splash park	3
Garden Area	3
More Trees	2
Canoe/kayak access	2
No swim zone signs	2
Improve trash situation	2
Geocaching opps	2
Bridge areas	2
Kiosk - fishing supplies, snacks	1
Museum expansion	1
clear invasive plants	1
Tadpole ponds	1
Hot tub	1
Riverwalk	1
Rope Course	1





WATER ACCESS

- Improved canoe/kayak launches
- Integrated parking
- Enhanced river views
- Riverside access
- Riverfront promenade
- Fishing

HISTORIC/CULTURE

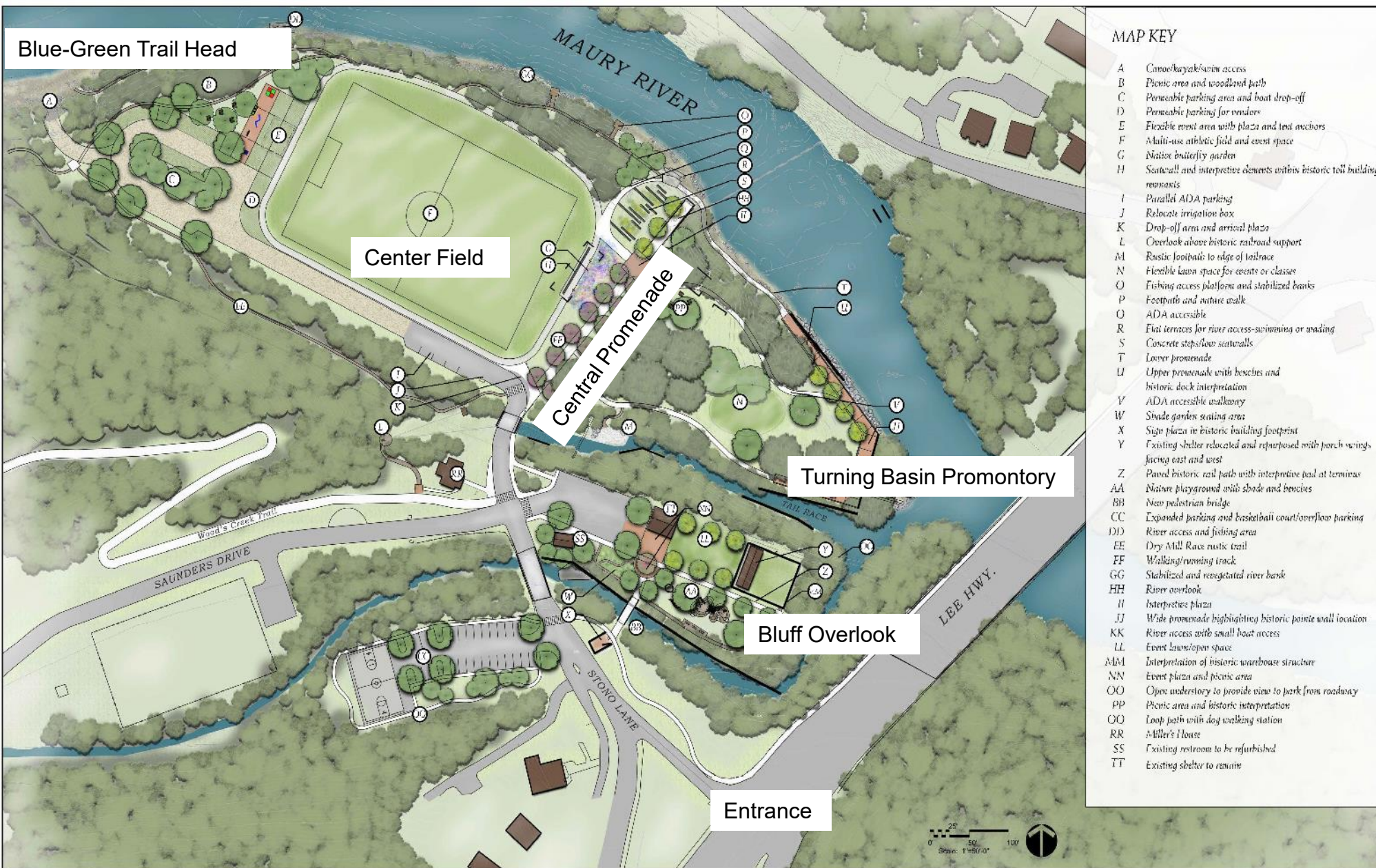
- Conservation of Mill Race
- Stabilization of structures
- Protection/conservation of resources
- Tactile interpretation
- Decluttering of signage
- Integrated tour

Environmental Resiliency

- Increased native vegetation
- Preservation and improvement of canopy
- Revegetation
- Stream bank stabilization
- Low impact development
- Integrated SWM

Recreation

- Athletic field improvements
- Event and performance
- Play areas
- Walking loop
- Trail access
- Fitness stations
- Equipment rentals



Blue-Green Trail Head

Center Field

Central Promenade

Turning Basin Promontory

Bluff Overlook

Entrance







Alternative VMI and Park entrances

Rte 11. (Lee Hwy.) multi-use path



Gateway intersection improvements



KEY

- 1 Maury River Trail connection and bridge sidewalk
- 2 Multiuse bridge path
- 3 Gateway landscape
- 4 Alternate Saunders Drive alignment
- 5 Alternate park entrance
- 6 Stono Lane pedestrian path

CENTRAL ACCESS PROMENADE



KEY

- G Perennial Gardens
- H Toll House Gardens
- I ADA Parking
- J Relocated Irrigation
- K Drop Off Plaza
- L Overlook
- O Fishing Platform
- P Nature Walk
- Q ADA Access
- R River Terraces
- S Stormwater Steps
- FF Multiuse Field
- HH River Overlook
- II Confederate Overlook



BLUFF OVERLOOK AND ENTRANCE



KEY

- X Sign/Historic Footprint
- Y Relocated Shelter
- Z Historic Rail Path
- AA Nature Play Area
- CC Expanded Parking
- BB Pedestrian Bridge
- SS Restrooms
- MM Warehouse Interp.
- OO Trimming for Views
- QQ Loop Path/Dog Station
- RR Miller's House
- TT Existing Timber Shelter



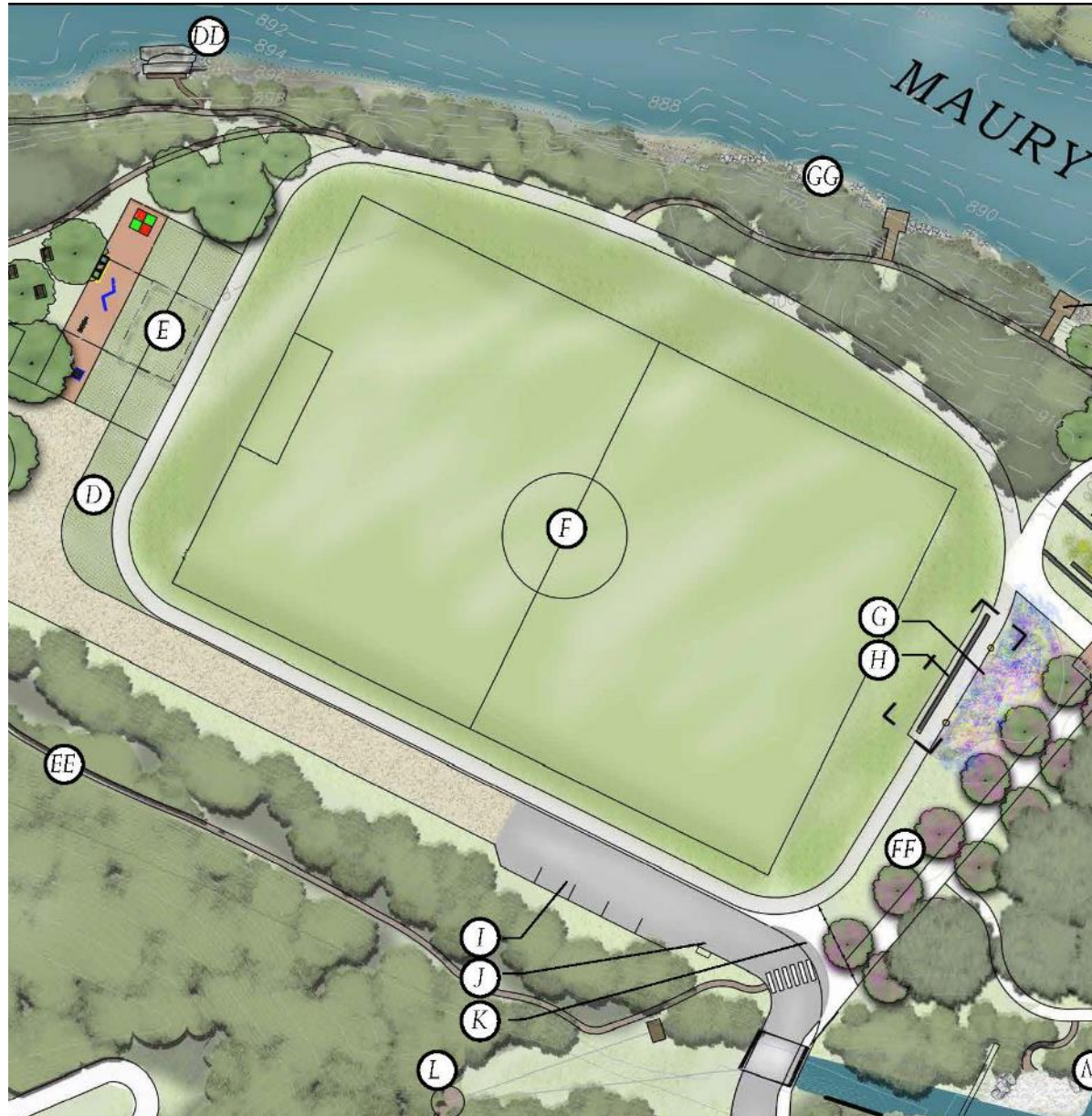
TURNING BASIN PROMONTORY



KEY

- M Tail Race Access
- N Multi Use Lawn
- T Lower Promenade
- U Upper Promenade
- V Loop Path
- KK River Terraces
- JJ Upper Terrace
- PP Picnic Area Interpret





KEY

- E Event/Play Area
- F Multiuse Field
- I Access Road
- EE Mill Race Trail
- GG Riverbank Stabilization Loop Path



BLUE WAY/GREENWAY TRAIL HEAD



KEY

- A Canoe/Kayak/Swim
- B Woodland Picnic & Path
- C Permeable Parking
- D Vendor Parking
- E Event/Play Area
- DD River Terrace/Fishing
- EE Mill Race Trail

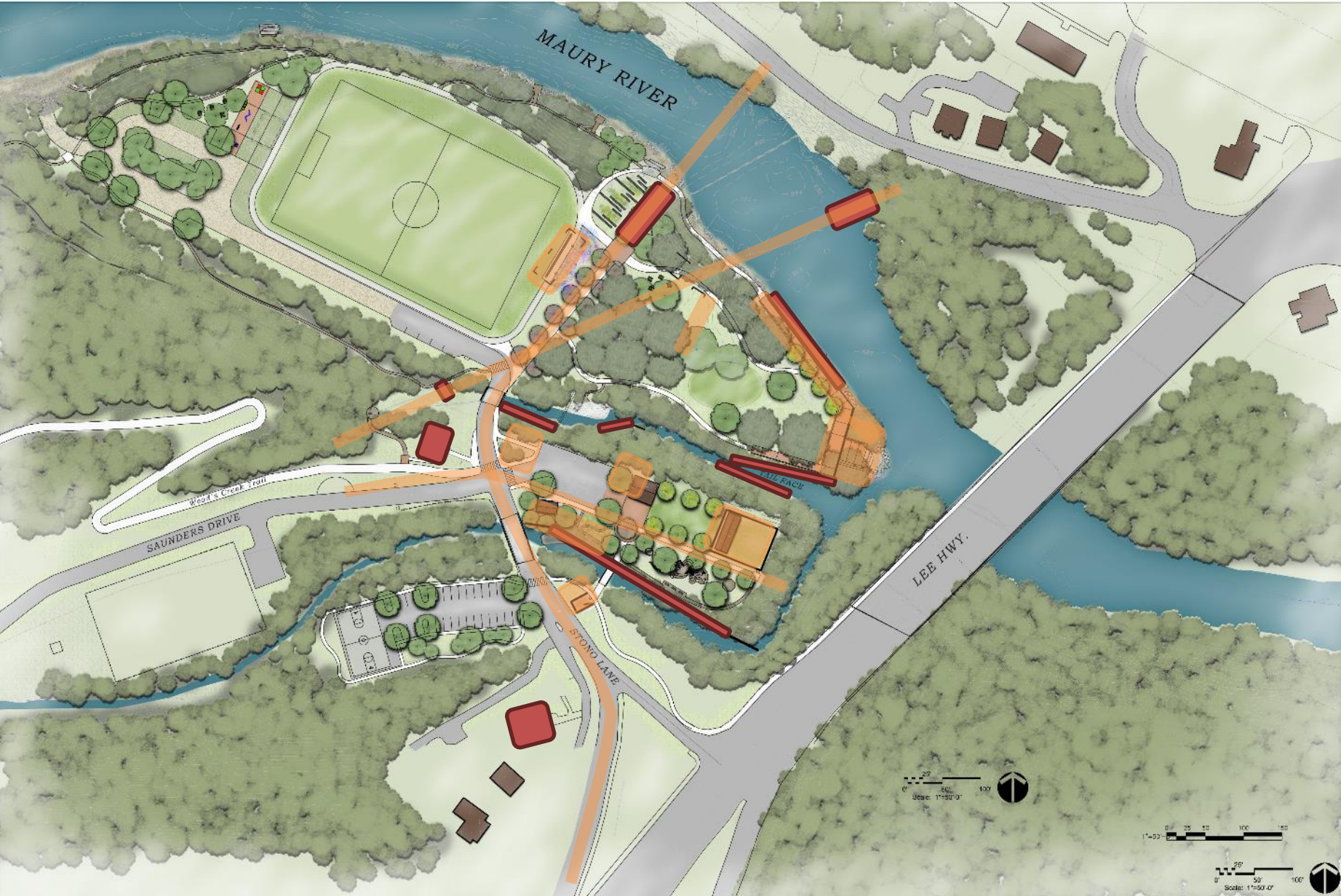




Preserve and Interpret

- **Protect** known and likely archaeological resources through **minimization** of land **disturbance**
- Continue archaeological investigations, historical research, and **documentation** and assessment of historic structures to protect the **integrity** of the historic district and to support **site design** and **interpretation**
- **Preserve** surviving historic structures and other significant built resources through **stabilization** and **repair** following *The Secretary of Interior's Standards for the Treatment of Historic Properties*
- Create a **visitor experience** that is **research-based**, focused on the interrelated historical and ecological significance of Jordan's Point and its environs, and addresses visitor experience goals and objectives established by the City of Lexington and key stakeholders
- Ensure the **compatibility** of proposed new interventions by appropriately **responding** to the **historic character** of the site

CULTURAL RESOURCES



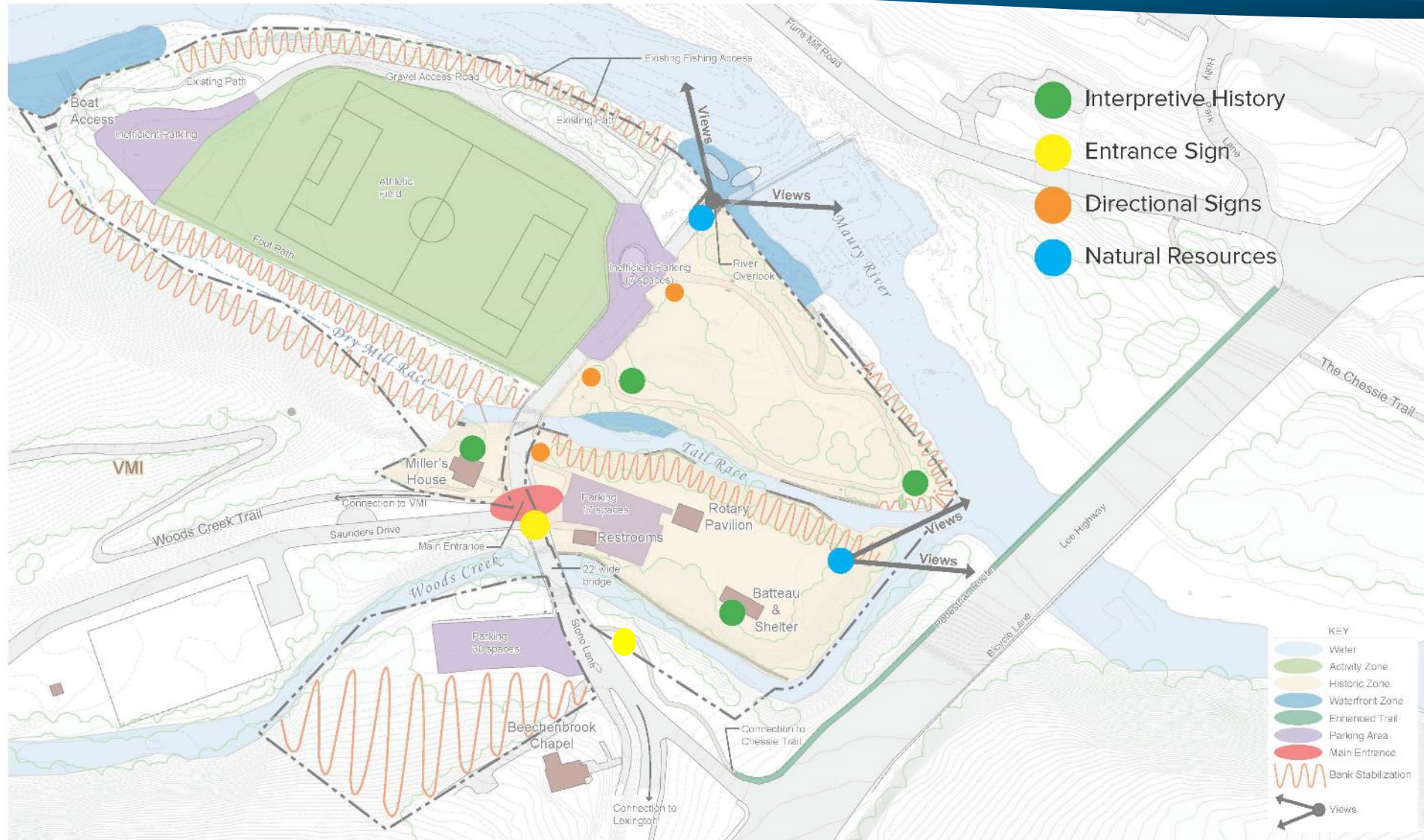
KEY



Visible/Remaining



Traces & Sub Terrain



WAYFINDING



Wayfinding signage will orient the visitor and provide insight to the recreational opportunities at JPP.

Details on the signs could include:

- Map
- Rules and Regulations
- Site History
- Site Locations
- Recreational Activities
- City Information
- Partnering Organizations
- Support and Donation Information



GROUND MARKERS



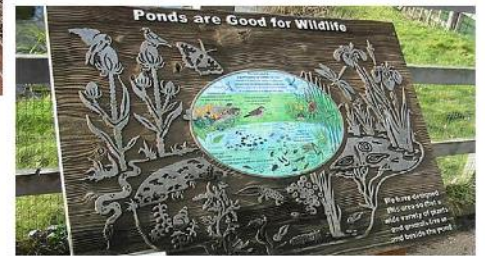
Ground markers will help orient the visitor and provide insight into the history and the historic structures of JPP. Ground markers can also be used to create a timeline or provide quotes from significant figures.



TACTILE EXPERIENCES



The team proposes the placement of interpretive signage throughout the park, especially at the water's edge. These signs could feature information about the ecology and activities.



SUPERIMPOSED GRAPHICS



The team proposes using superimposed graphics for historic features and structures at JPP. Interpretation becomes interactive and provides visitors with the opportunity to see the original architecture and purpose of the structure. It also allows visitors to explore how history has led to what remains today. Whether the features were destroyed by nature or by man, these signs can be used as a great tool to discuss topics like erosion, or history of industry in the area.



OVERLOOK



The team recommends the addition of an overlook to the property. An overlook would allow visitors to see the effects of erosion, flood lines, and new channel potential. It provides an alternative perspective. Adding content or elements (timeline, quotes, graphics) into the overlook would help connect visitors to the site's past and the environment and condition it is in today.



NATURE PLAY



Outdoor exhibits can be playful—engage with your surroundings to connect with nature. This participatory environmental design encourages movement, engagement, and energy, to understand the relationship between people and the environment. Our team recommends nature play to create a sense of adventure, discovery, and appreciation among visitors of all ages. An informal approach to education can be taken to emphasize interaction with nature. Younger children will delight in finding surprises and uncovering secrets while older groups can gain a sense of confidence by building their own experiences.



MOBILE TECHNOLOGY



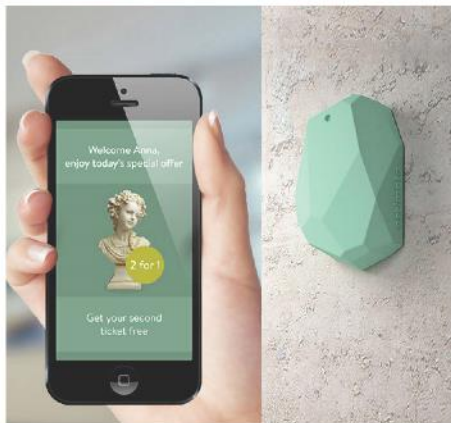
App
Our team proposes the development of a phone app that provides information about the park, both historic and contemporary. The app could provide a walking tour with the option of exploring places and people related to the sites. We propose developing an app in conjunction with the Miller House, Museum and local historians.



iBeacon
Electronic beacons, designed for indoors or outside, have interesting interpretive potential. These Bluetooth transmitters can send notifications to personal phones when they are in close proximity. Once the message is received, a user can simply open the notification on the phone to view each beacon's content.

Electronic beacons require app development and a method for users to download the app onto personal phones. However, they eliminate the visual intrusion associated with wayside installations and avoid vandalism since they can be easily hidden from view.

Unlike interactive panels, beacons can offer text, images, sound, and video. At present, beacon battery life is approximately 12 months.



PUBLIC ART



Public art and engaging visuals help visitors identify, define, and relate to a sense of place. These thoughts and relations would further seep into the greater impact of the site, the people that helped form it, both past and present, and the activities that helped sustain the community.



Lexington has a wealth of art galleries and artisan shops. By working with community artists and artisans to generate a mural depicting the evolution of the Lexington community, the project will radiate inclusivity, camaraderie, and community growth. The mural could depict important themes or people associated with the park. The team proposes a mural to be painted on the structure that houses the restrooms.



Requirements and Best Practices

Water Quality

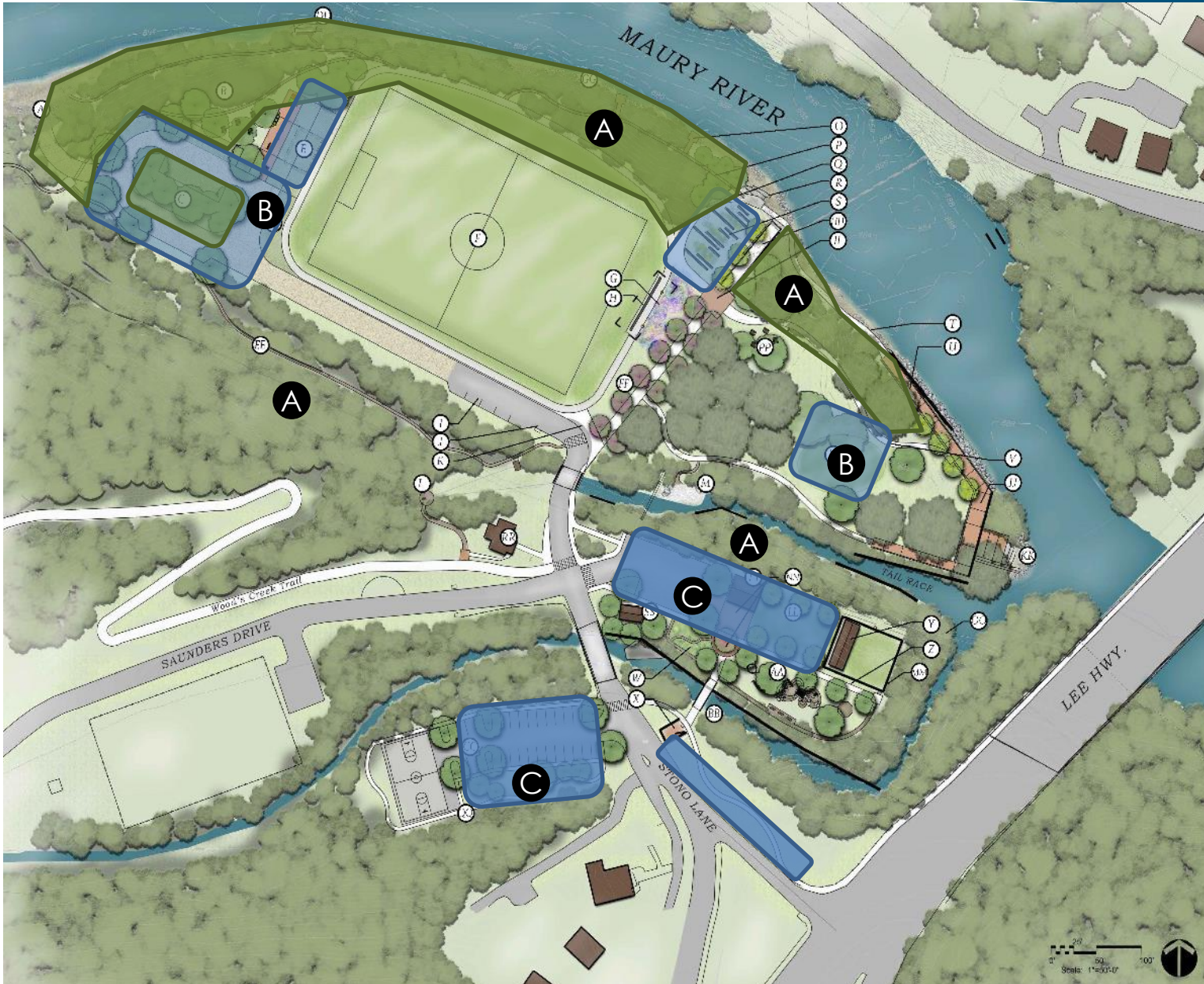
- Over 1 acre disturbance
- Potential reduction in impervious area
- Common plan of development
- Reduce phosphorous load by 20%

Water Quantity

- Less than 1% drainage area
- Meets state channel protection/flood req.
- No additional retention needed or feasible
- Likely reduction in post development run off

Means and Methods

- Ⓐ Conserved open space and revegetation
- Ⓑ Enhance permeability and TOC (flooding/siltation)
- Ⓒ Onsite mitigation or purchase of credits



Permitting

Clean Water Act

- USACE Nationwide Permit 42 – 60-90 days

FEMA

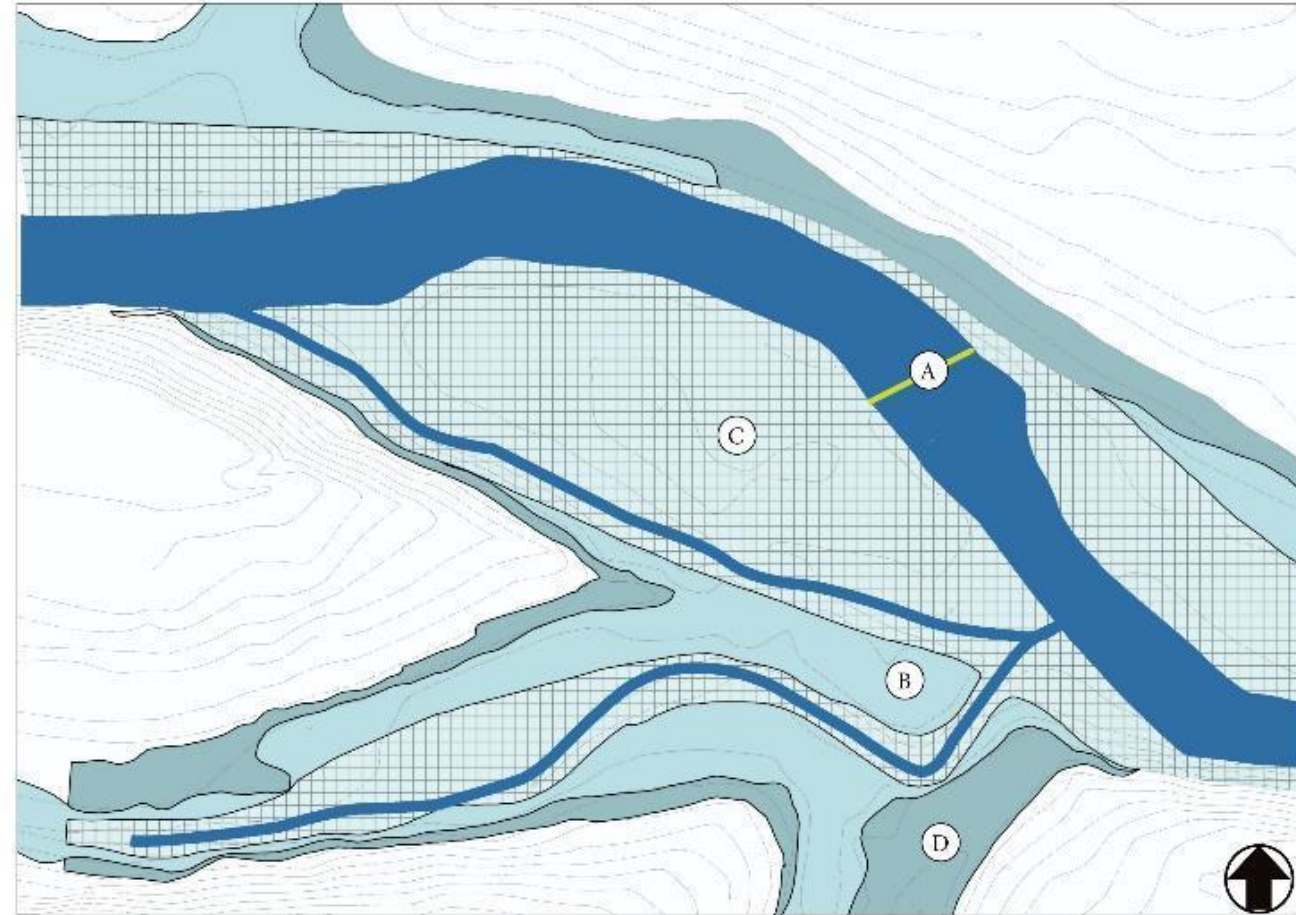
- Zone AE (15' + GE)
- 0 balance fill
- LOMR/CLOMR

Protected Species

- Mussels
- Bats
- Limited impacts

Cultural Resources

- 17 mapped features
- Section 106 Compliance
- Construction monitoring and DHR notification



	HISTORIC RESOURCE PROTECTION OR INTERPRETATION			ENVIRONMENTAL PROTECTION OR REHABILITATION			RECREATION			WATER ACCESS			RECOGNIZED NEED?					
	Feature is visible in the landscape	Feature is not visible but shown in historic documentation	Impacts to resource avoided or minimized or opposed	Opportunity for interpretive signage or interaction	Impacts river or riparian quality	Enhances native ecosystem and increased tree canopy	Permittable/allowed	Opportunity for interpretation or interaction	Provides for active organized recreation	Active living and play - not organized	Opportunity for events	Allows for canoe/kayak/saddleboard access	Swimming or wading access	Fishing access	Views to river is a predominant feature	Existing amenities/gifts used	Need unmet in surrounding area	Expressed demand (stakeholders, public meetings, surveys)
A: Canoe/kayak/swim access at existing boat access					X		X	X	X	X	X	X		X	X	X		
B: Picnic area and woodland bath with river views						X	X	X		X	X				X		X	
C: Permeable parking area and boat drop-off					X		X	X		X	X	X				X	X	
D: Permeable parking for canoe/kayak/food/beer vendors					X		X	X	X	X						X	X	
E: Flexible event area with permeable plaza and tent anchors					X		X	X	X	X						X	X	
F: Multi-use recreational field and event space							X		X	X						X	X	
G: Native butterfly garden							X	X	X								X	
H: Seatwall and interpretive elements within historical building remnants	X	X	X														X	
I: Parallel ADA parking									X	X						X	X	
J: Relocated irrigation box					X											X		
K: Drop-off area and arrival plaza					X		X										X	
L: Overlook above historic rail road support	X	X	X				X	X									X	
M: Rustic footpath to edge of terrace	X	X	X	X			X	X	X			X		X		X	X	
N: Flexible lawn space for events or classes							X	X	X	X						X	X	
O: Fishing access platform and stabilized banks					X	X	X	X	X			X	X		X	X	X	
P: Footpath and nature walk					X	X	X	X	X				X		X	X	X	
Q: ADA accessible river access path							X		X			X	X			X	X	
R: Fatler races for river access-swimming or wading					X		X	X	X			X			X	X	X	
S: Concrete steps/low seatwalls and LID stormwater structures					X	X	X	X					X			X	X	
T: Lower promenade and river walk							X		X		X	X		X		X	X	
U: Upper promenade with benches and historic dock interpretation	X	X	X	X			X	X	X			X	X		X	X	X	
V: ADA accessible walkway							X		X							X		
W: Shade garden seating area					X	X	X										X	
X: Sign plaza in historic building footprint	X	X	X						X								X	
Y: Existing shelter relocated and repurposed with porch swings facing east and west									X	X			X		X	X		
Z: Paved historic rail path with interpretive pad at terminals	X	X	X						X								X	
AA: Nature playground with shade and benches					X	X	X									X	X	
BB: New pedestrian bridge							X		X							X	X	
CC: Expanded parking and basketball court/overflow parking								X	X	X						X	X	
DD: River access terraces and fishing area					X	X	X		X			X	X		X	X	X	
EE: Dry Mill Race rustic trail	X	X	X				X	X	X								X	
FF: Walking/running track								X	X	X						X	X	
GG: Stabilized and revegetated river bank					X	X	X						X				X	
HH: River overlooks	X	X	X							X			X		X	X	X	
II: Interpretive plaza							X										X	
JJ: Wide promenade highlighting historic wall location at "point"	X	X	X				X		X				X		X	X	X	
KK: River access with small boat access					X		X	X	X	X	X	X		X		X	X	
LL: Event lawn/open space								X	X	X						X	X	
MM: Interpretation of historic warehouse structure	X	X	X														X	
NN: Event plaza and picnic area								X	X							X	X	
OO: Open view to park from roadway																	X	
PP: Picnic area and historic interpretation	X	X	X				X		X	X				X		X	X	
QQ: Loop path with dog walking station					X		X									X	X	
RR: Miller's House																X	X	
SS: Existing restroom building to be refurbished																X	X	
TT: Existing shelter to remain																X	X	

Priorities:

- Define safe water access points for different uses
- Reduce vehicular traffic on the island
- Preserve and enhance tree canopy and streambank vegetation
- Improve and add recreational opportunities
- Preserve open space
- Incorporate interactive cultural and historical interpretation

Questions & Discussions

Thank You for Your Time!

