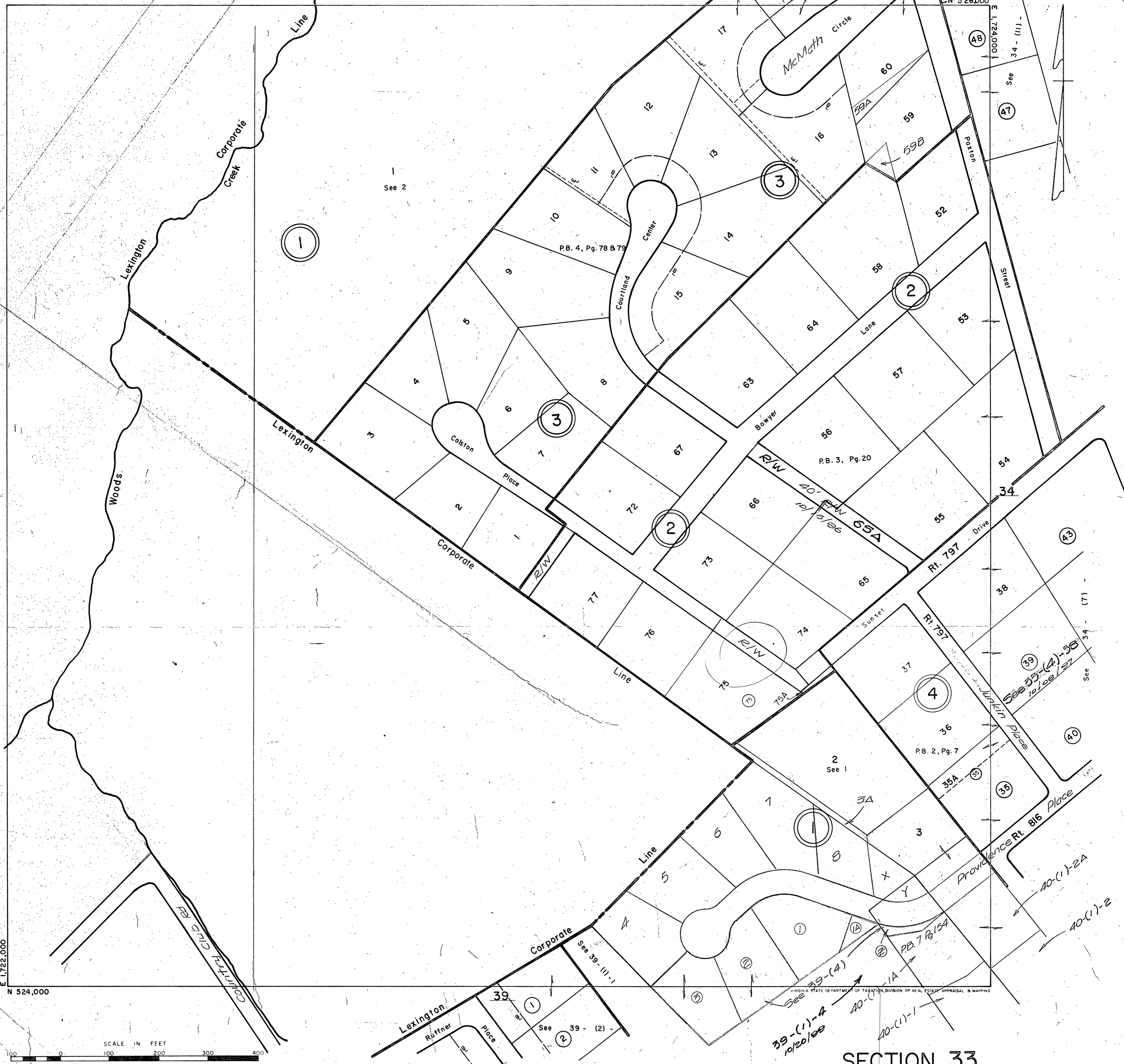


# LEXINGTON



## SECTION 33

See 39-(1)-4  
10/20/66  
See 39-(4)  
20-(1)-1A  
20-(1)-1  
20-(1)-2A  
20-(1)-2

VIRGINIA STATE DEPARTMENT OF TAXATION, DIVISION OF REAL ESTATE APPRAISAL & MAPPING